

Lidder

DRY BEAN AND PULSES HARVESTER MACHINE



LIDDER IS THE  BRAND

DRY BEAN - LEGUME DIGGER / REMOVER MACHINA



IMPORTANT POINTS TO BE CONSIDERED DURING SOWING:

Sowing should be done by grain drill with 45 cm spacing

It is recommended to sow directly since the crop will be smushed by tractor and there will be some picking works.

(It won't hinder machine's running)

The field should be well prepared and frequency of the lines should be proper.

IMPORTANT POINTS TO BE CONSIDERED DURING HARVESTING:

Harvesting time is a critical factor. If harvesting starts late, crop may dry and it causes more loss.

After 2 years of research we have determined that harvesting in the night time would be more efficient because of high humidity rate.

In the morning times or in midday the crop is more dry because of the hot weather and it might slow down machine's performance.

In this case harvesting capacity would be reduced.

Early morning or late afternoon are more appropriate times for harvesting.

In order to get the best result and for an easier job, it is recommended to harvest during night times.



WhatsApp: +90 553 439 89 69



Handle your legume and dry bean, pea crop gently with virtually no loss. The Parallel Lift Front Divider System will provide dependable smooth vine separation in the toughest conditions. One man, one tractor, one pass through the field...handling your bean and pea crop gently with virtually no loss. The picking fingers provide a smooth gentle flow of material to the windrow.

POWER: 80 HP (Dual Thrust)

CAPACITY: 5 Lines (45 cm sowing distance (spacing))

DAILY HARVESTING CAPACITY: 50-75 Decare

(depends on conditions such as season ,hardness of soil, crop frequency)

WEIGHT: 1.500 KG

OPARATIONG CHARACTERISTIC : The tail moves through the connected mechanical and hydraulic system.

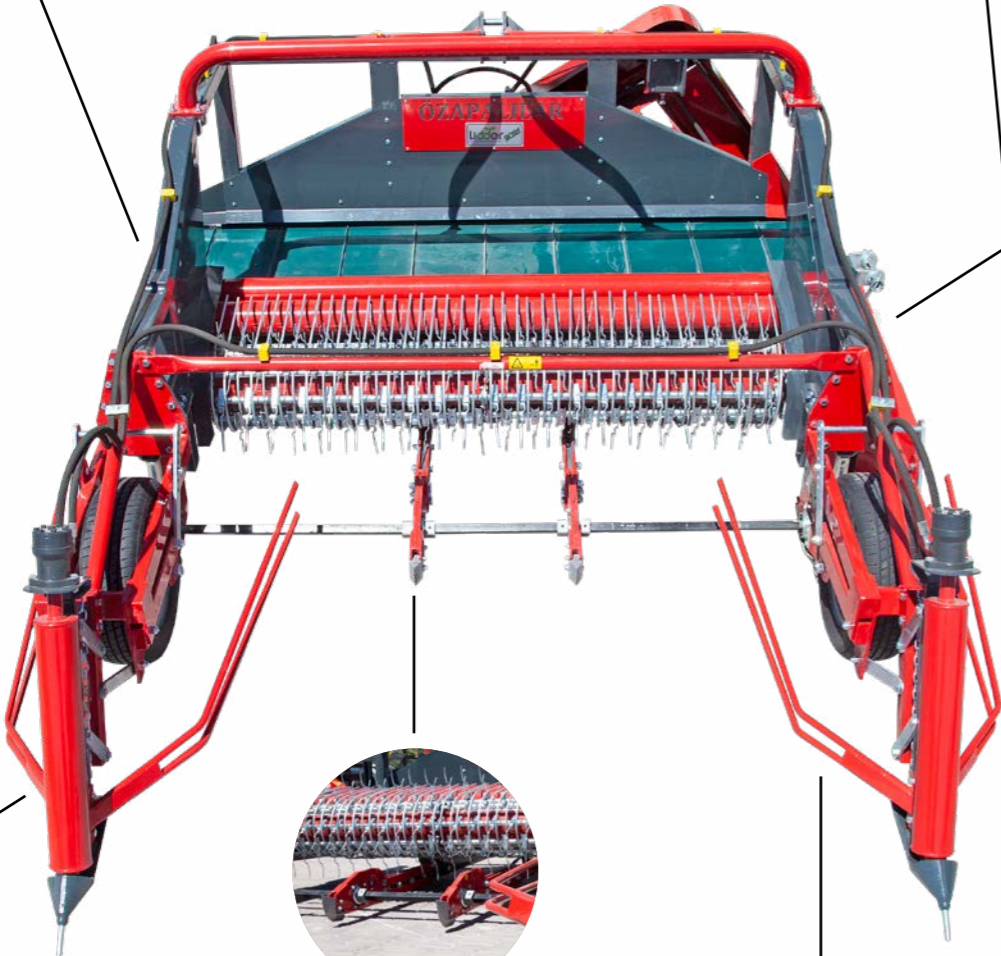
OPTIONAL EQUIPMENTS

TECHNICAL SPECIFICATIONS

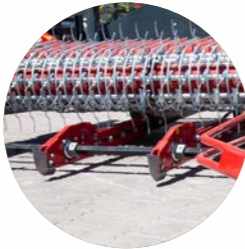
Reversible conveyor belt or central wind-rowing



Maximum collection with specially designed harrows



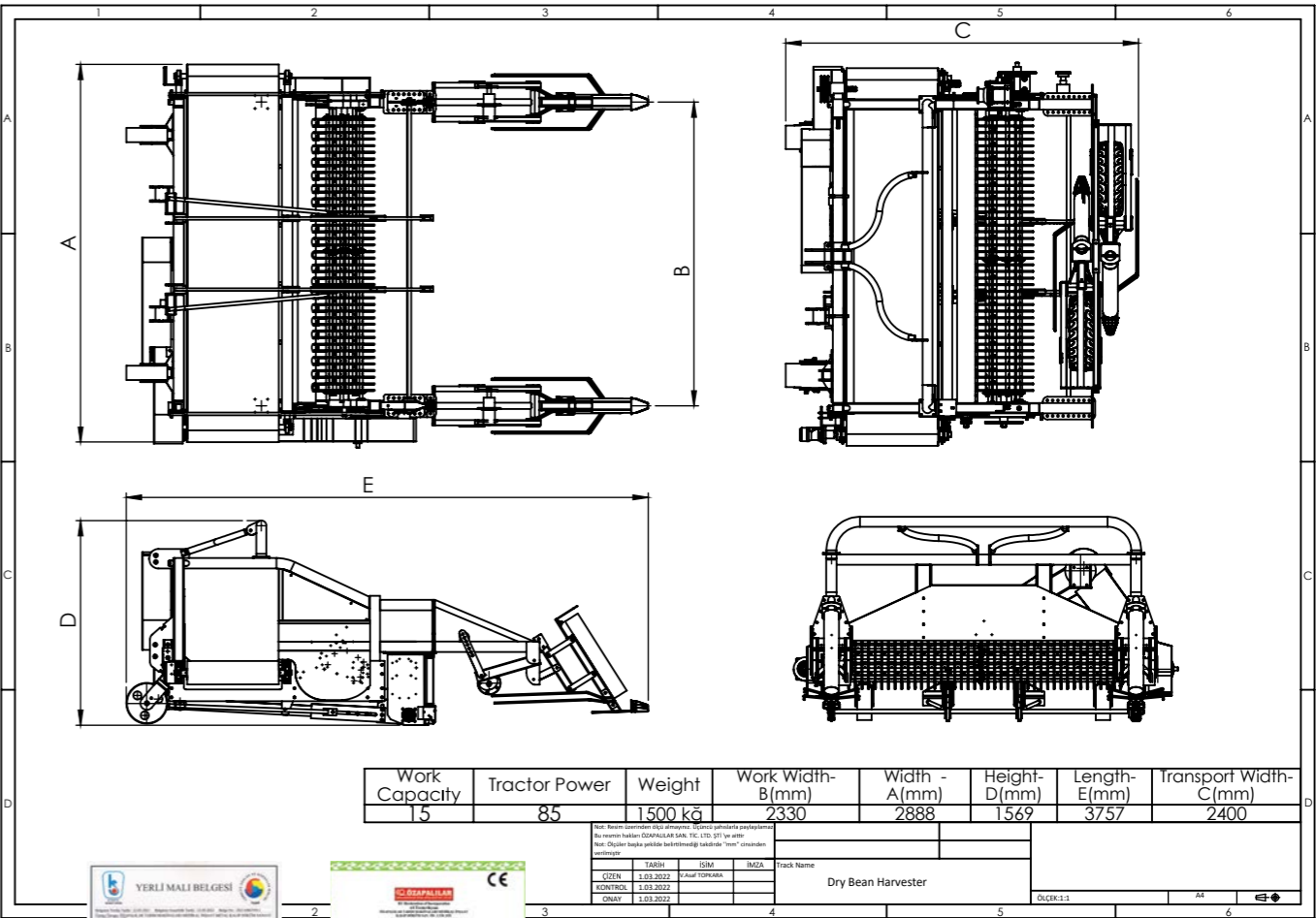
Its special alloy casting, it provides comfortable working underground.



Lines between legumes separator bars for opening



Separated hydromotors more efficient mixed of fingers



Harvestable Legumes



Dry Beans



Cowpea



Pea



Chickpea



Kidney Beans



LIDDER IS THE APLOMB BRAND

WhatsApp: +90 553 439 89 69

DRY BEAN & LEGUME HARVESTER MACHINE



Specially designed spring system takes the product from the ground without pouring. It makes harvesting undamaged with special blades.

Dry Bean & Legume Harvester Machine; picking and pounding the grains and pulses that have been cut or plucked from the ground and transporting the straw as a product to the pulses warehouse; It is a new generation threshing machine that automatically performs these operations in one go.

Harvestable Legumes



Dry Beans

Cowpea



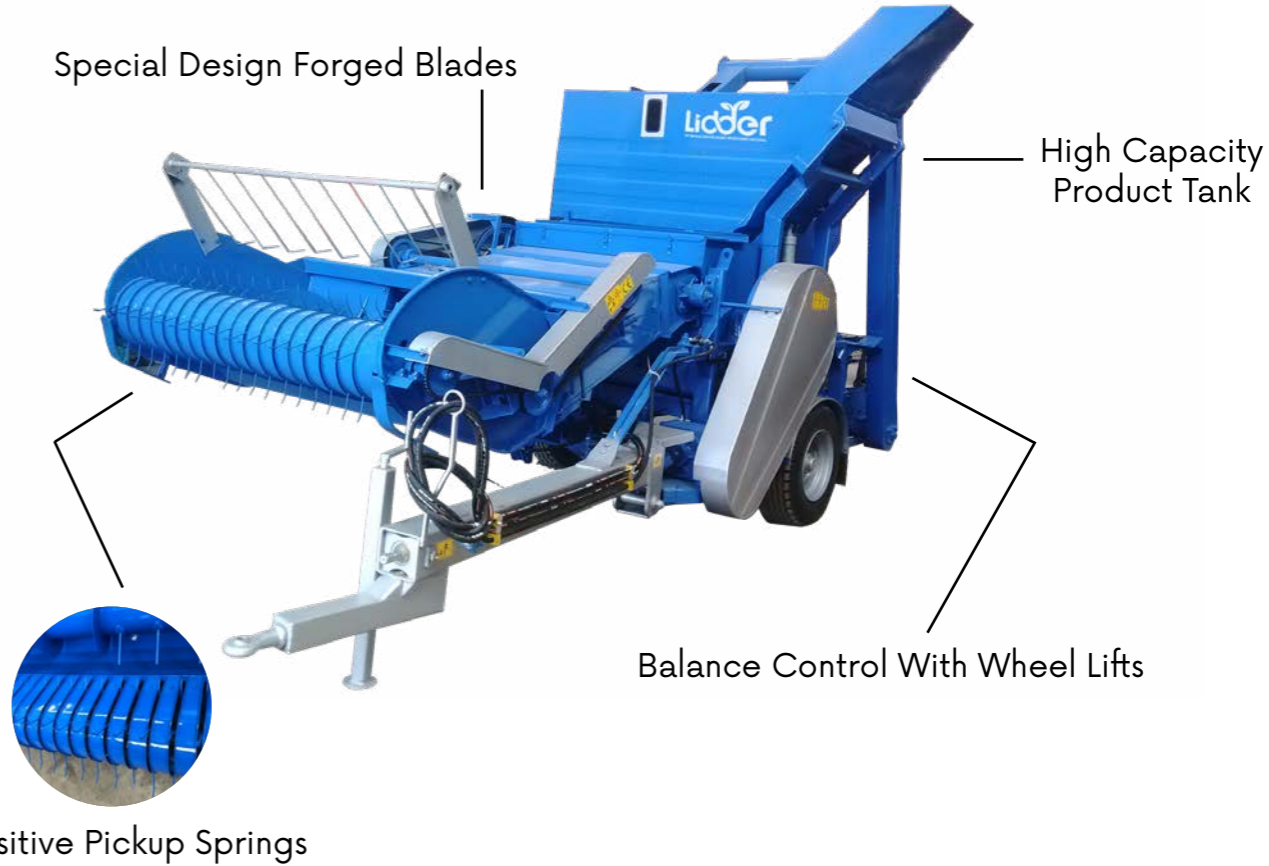
Pea

Chickpea



Kidney Beans

Harvester Machine Technical Specifications



Length- Width-Height: 5700 mm - 2600 mm - 3260 mm

Weight (Bean & Chickpea Harvester) : 2.800kg.

Weight (Lentil Harvester) : 3.100kg.

Forging Hopper Capacity : 1200 mm

Pickup With From The Ground : 1750 mm

Required Hydroulic Output : 4 Output (Opsiyonel/Optional)

Revolutions Per Minutes: 540 dv/dk

Product Tank Volume : 0,85 m³

Required Power : 60-80 Bg/HP

Tire Size : 11.5 / 80 - 15.3

Optional Hole Sizes
For Different Crops



Part Of Name	Sieve Dimension	Red Lentil		Green Lentil		Chickpea		White Bean		Red Mullet	
Sieve f Batör	1180x1250	Ø14	Ø16	Ø16	Ø16	Ø16	Ø28	Ø28	Ø30	Ø28	Ø30
Product Sieve	370x1115	Ø5		Ø8		Ø14		Ø12		Ø12	
SoiB ieye	1255x800	2x20		2x20		4x20		3x20		4x20	
Casting Sieve	1200x675	Ø3		Ø3		Ø3		Ø3		Ø3	
Elevator Bottom Sieve	435x150	Ø3		Ø3		Ø3		Ø3		Ø3	

Given sieve sizes are factory settings. Based on the size of your crop you may choose sieves with bigger or smaller holes.

TO ACHIEVE THE FIRST ONES NEED A LEADERSHIP

**FARMER
FRIENDLY**

Ladder



Fevzi Çakmak Nb. Sıla St.
Elit Industry Area 46/A Karatay / KONYA / TURKEY

 **+90 533 283 75 91 - +90 506 996 82 79**
www.ozapalilar.com info@ozapalilar.com